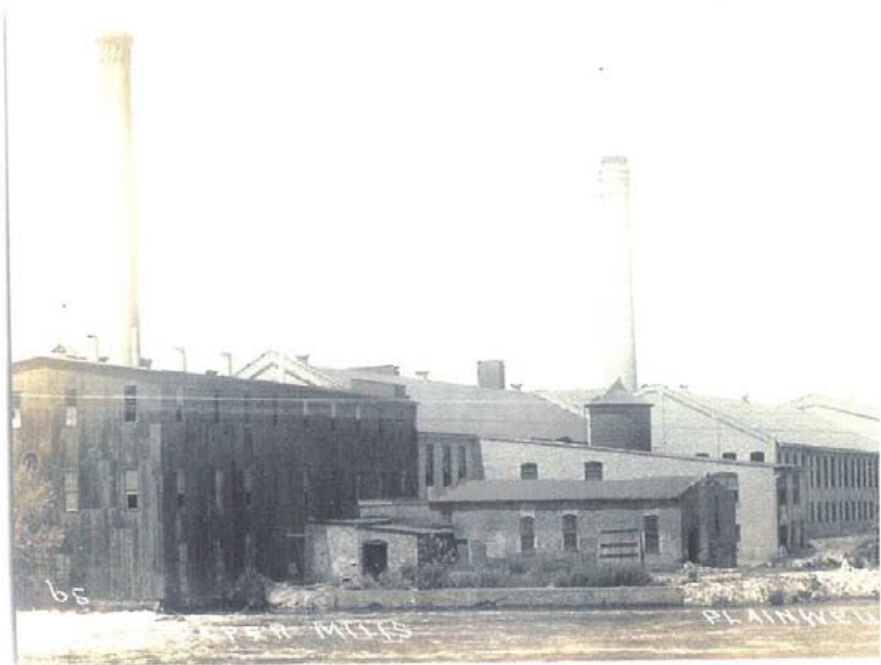




VIEW OF PAPER MILL - PLAINWELL, MICH. 12-73



PAPER MILLS

PLAINWELL

ju 1913

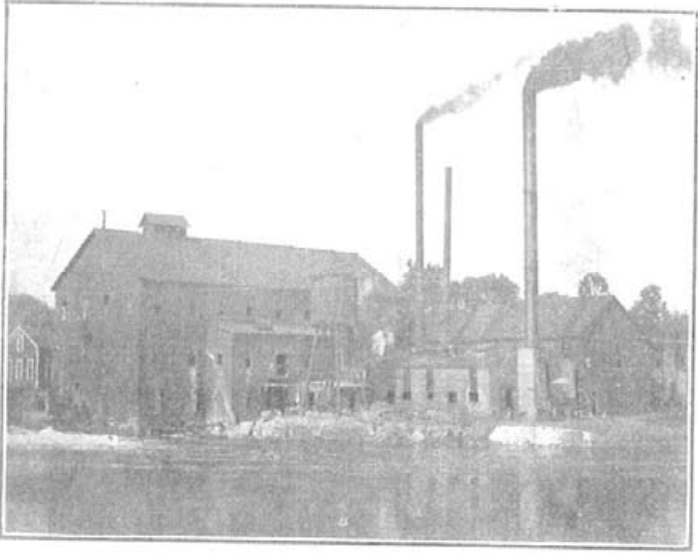


The Kalamazoo River - Plainwell



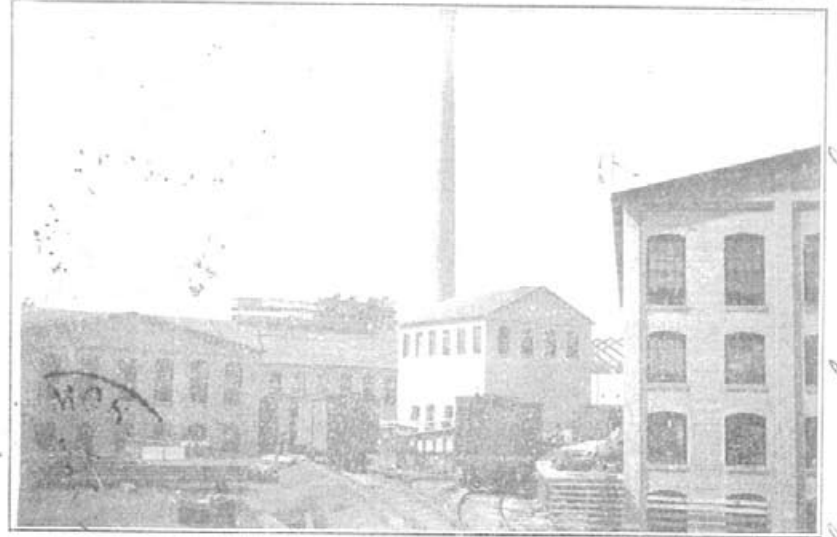
MICHIGAN PAPER CO. MILL PLAINWELL MI

1887



The Michigan Paper Company's Old Mill, built in 1887, Plainwell, Mich.

1906



The Michigan Paper Company's New Mill, built in 1906, Plainwell, Mich.

This is the mill when it was built.



THE MICHIGAN PAPER COMPANY
PLAINWELL, MICHIGAN

1907



Aug 28, 1907
The Michigan Paper Company New Mill, built in 1906, Plainwell, Mich.
has a capacity of 400,000 lbs. of paper per week. It is a very large mill and has a very tall chimney. The mill is situated on a hillside and has a very large area for the mill buildings. The mill is a very modern one and has a very large area for the mill buildings. The mill is a very modern one and has a very large area for the mill buildings.



Plant of Michigan Paper Co.
Plainwell, Mich.

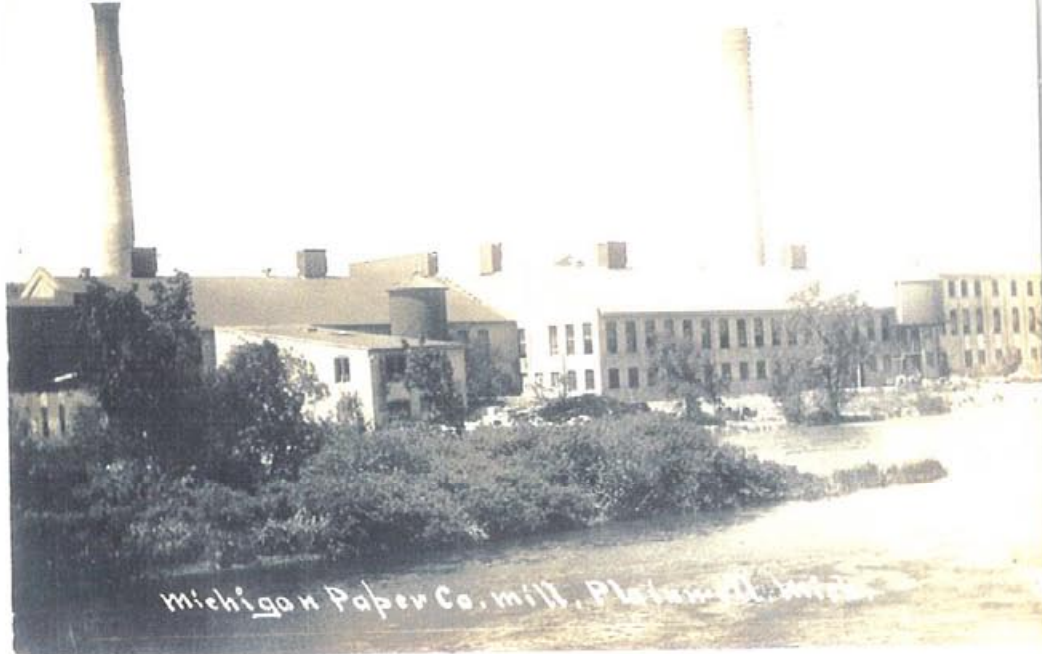


Michigan Paper Co. Plainwell, Mich.

1909



Michigan Paper Co. mill, Plainwell, Mich.



Michigan Paper Co. mill, Plainwell, Mich.



603
MICH. PAPER CO. PLAINWELL MICH.

M. LENTZ



THE PAPER MILL -
PLAINWELL, MICH.

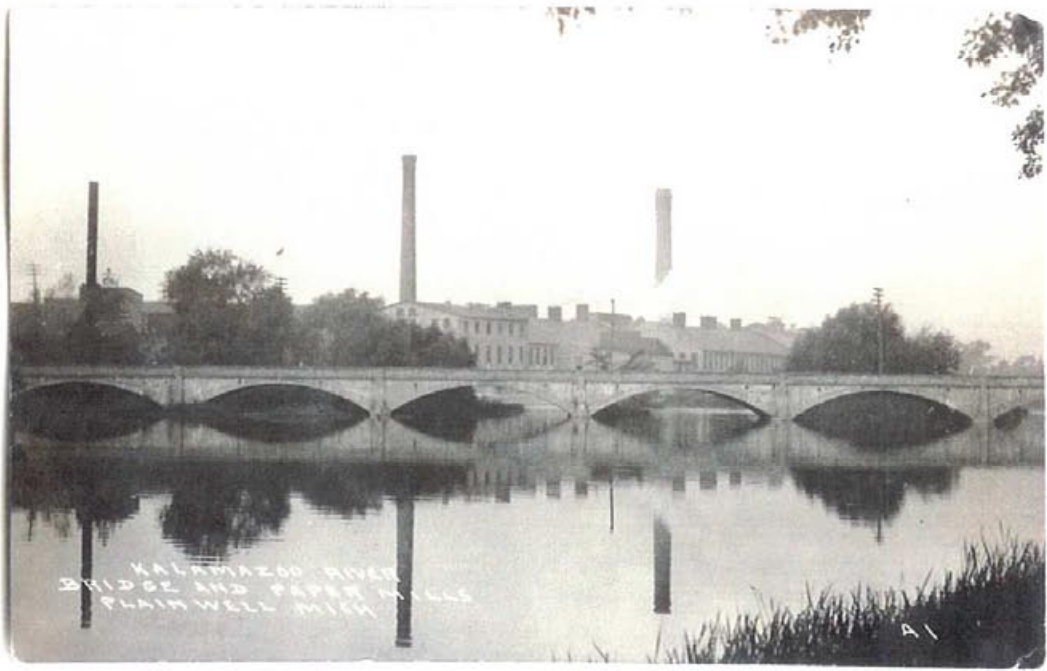


Michigan Paper Co. Plainwell Mich.

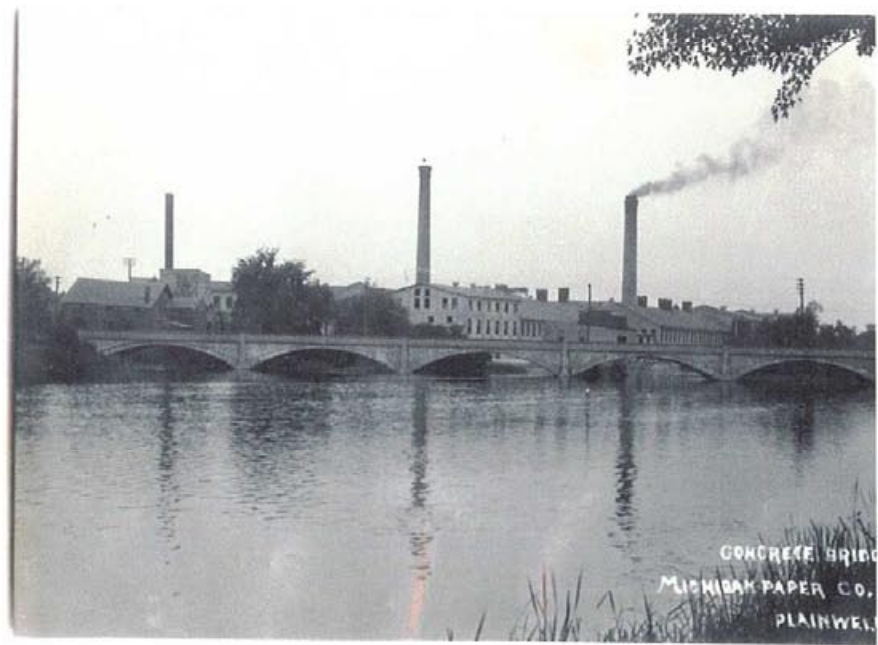


MICH. PAPER MILLS OFFICES PLAINWELL MICH.

M. 665

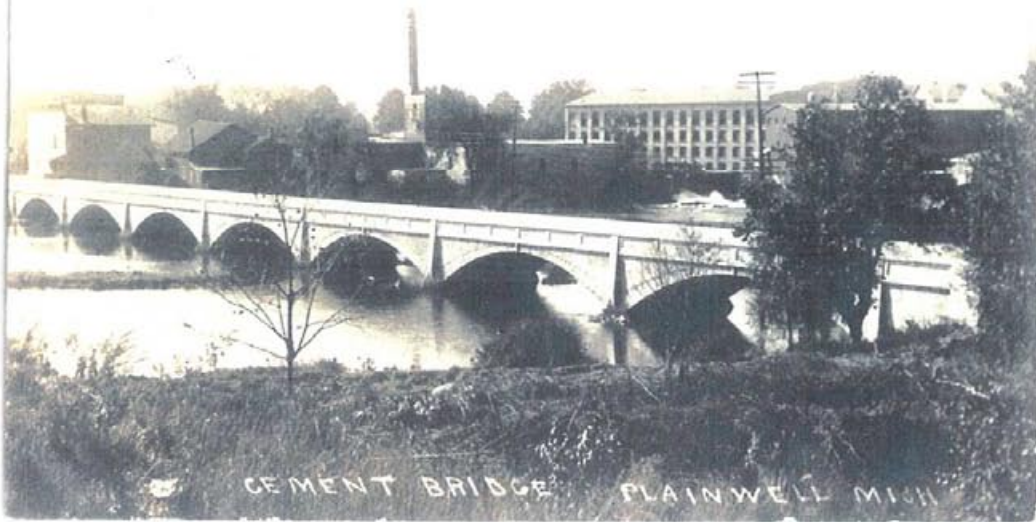


Kalamazoo River
Bridge and Paper Mills
Plainwell Mich



CONCRETE BRIDGE
MICHIGAN PAPER CO.
PLAINWELL

1910



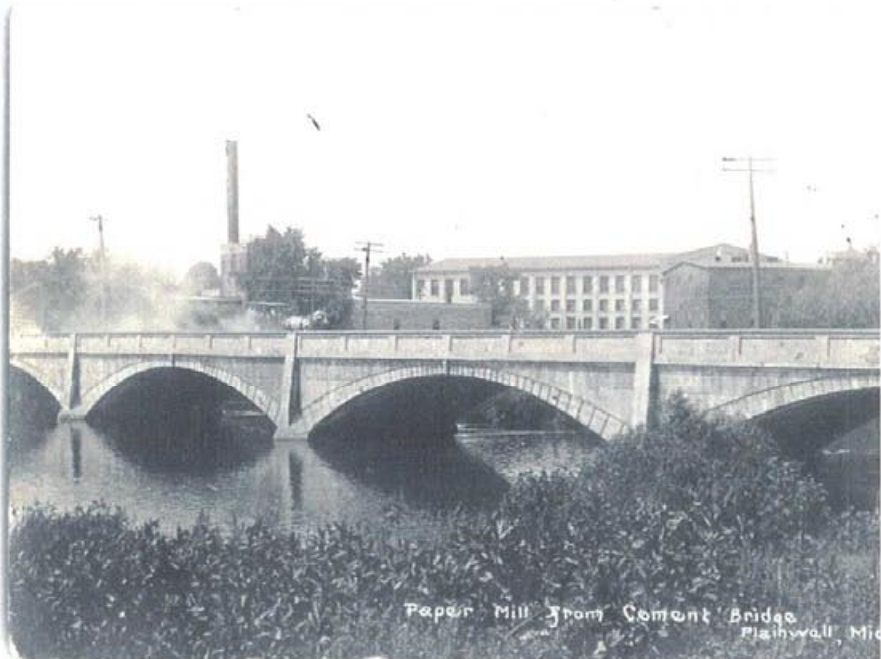
CEMENT BRIDGE PLAINWELL MICH



37580. Paper Mills, Plainwell Mich



PAPER MILLS PLAINWELL MICH. M1663



Paper Mill from Cement Bridge Plainwell, Mich

1992



~~1985~~ 1992



1985 ~~1993~~



1993



1992

