

Simpson Paper Co.  
March 1993



7821



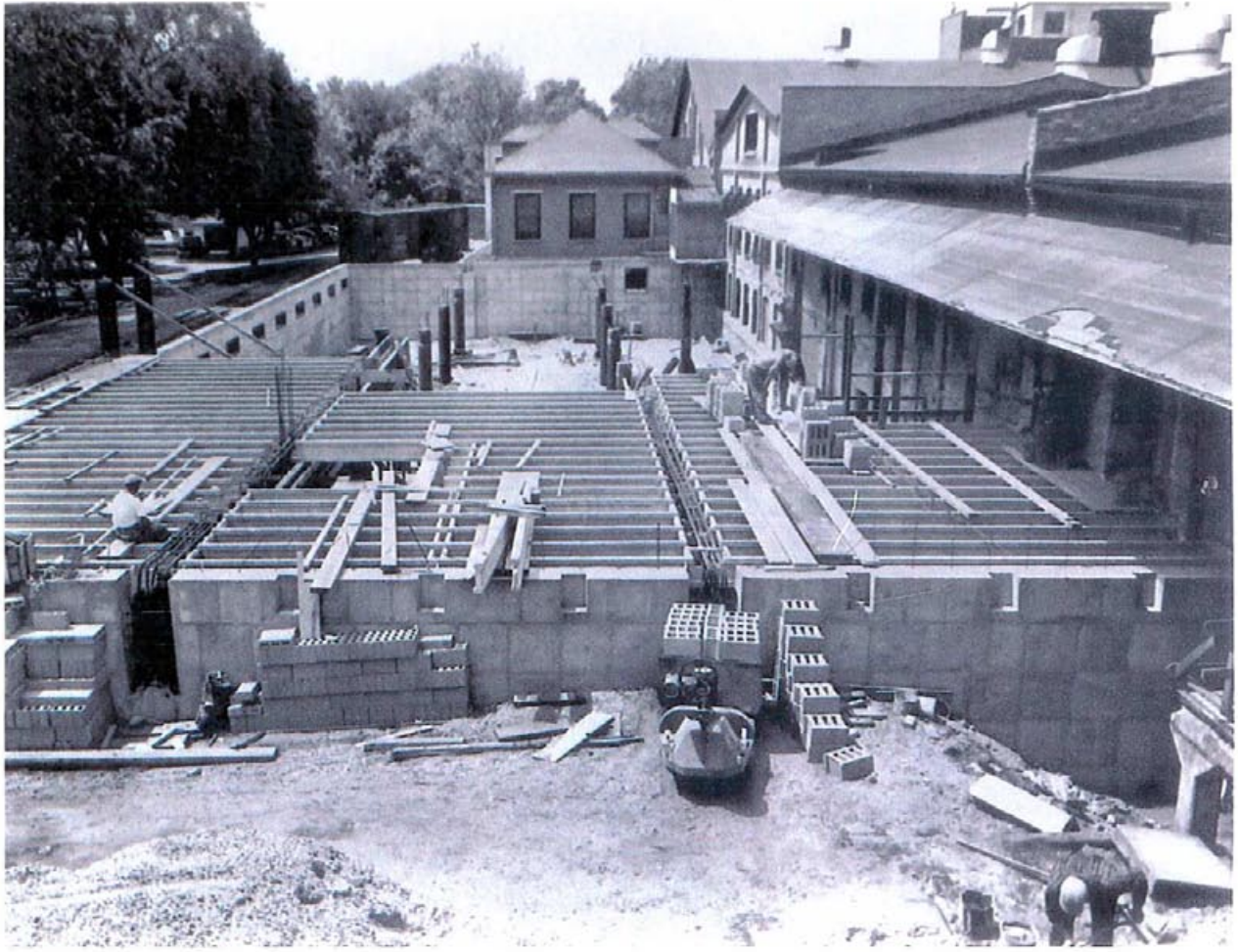
A sculpture representing 100 years of service to the community was unveiled during festivities Friday afternoon at Plainwell Paper. The sculpture was done by Sonny Dalton and was given to the company by the city's Chamber of Commerce. The three rollers represent the company's three paper machines, and when put together, form a "1." The two gears form zeros and the background

represents the company's colors and logo. The sculpture's rust represents the age of the company. Bill Newton, president of the Chamber of Commerce, said. The sculpture was presented to the company as a token of appreciation for all of the support given to the chamber over the years. "It's just our way of thanking them," Newton said.

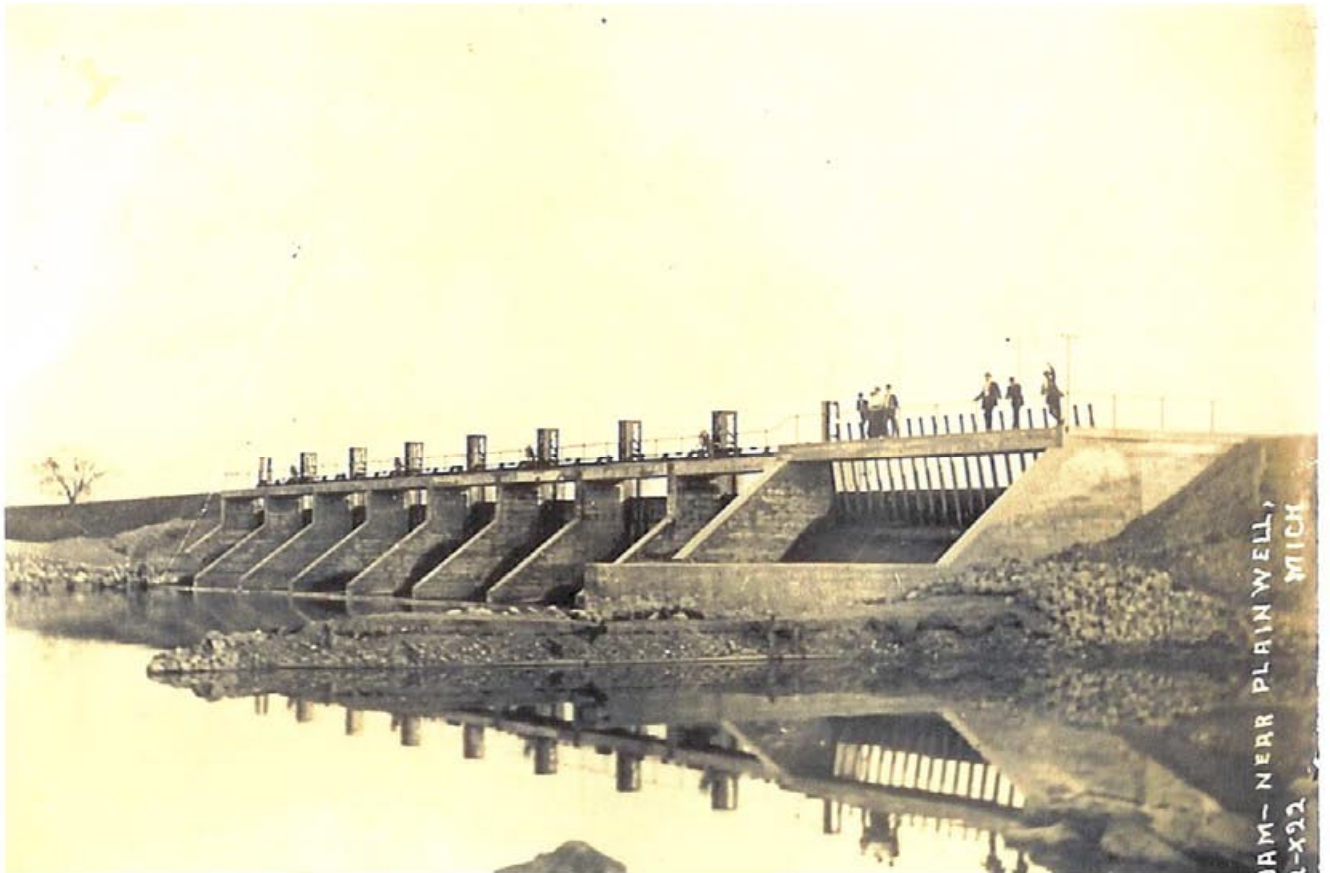
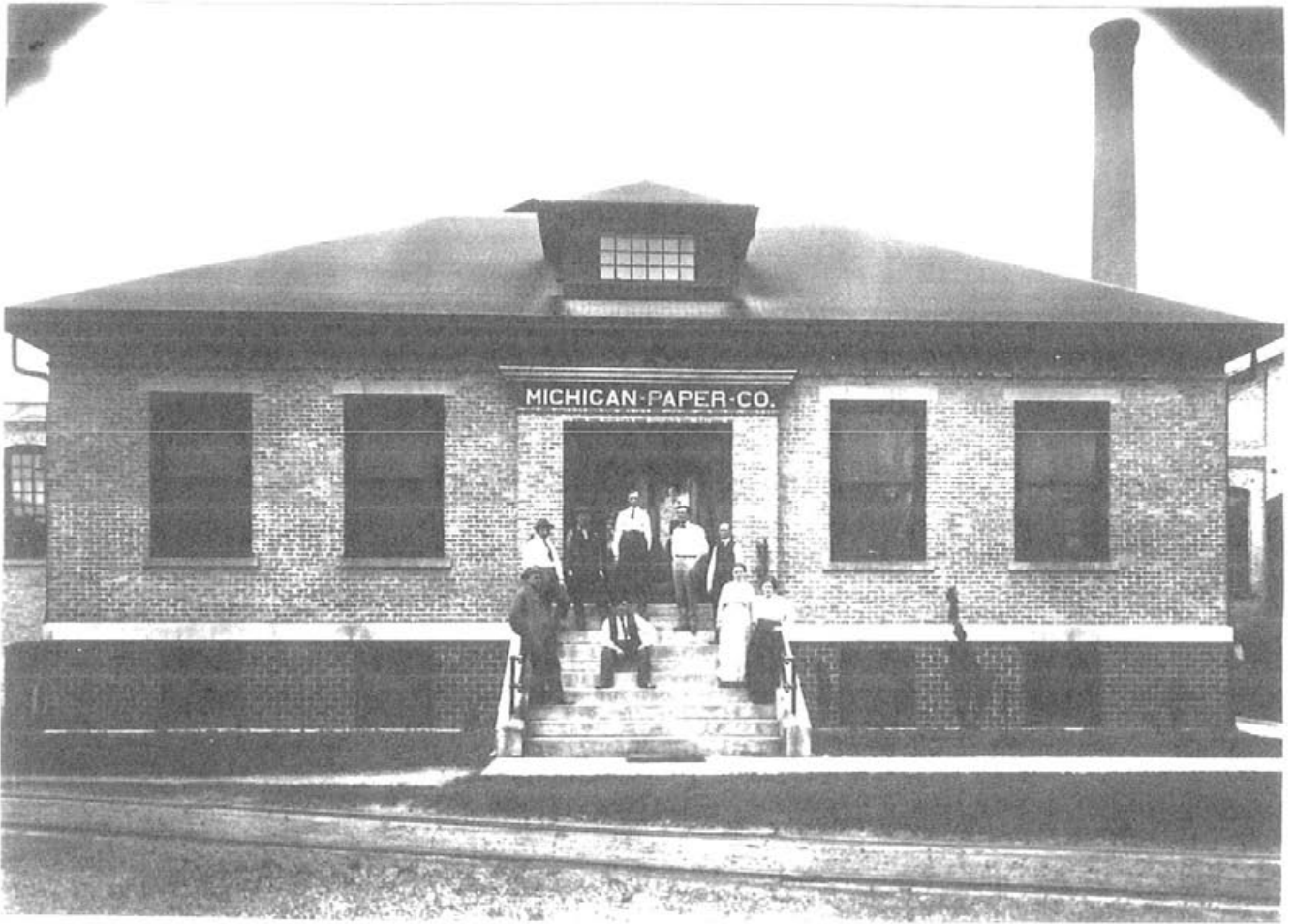
—Union Enterprise photo

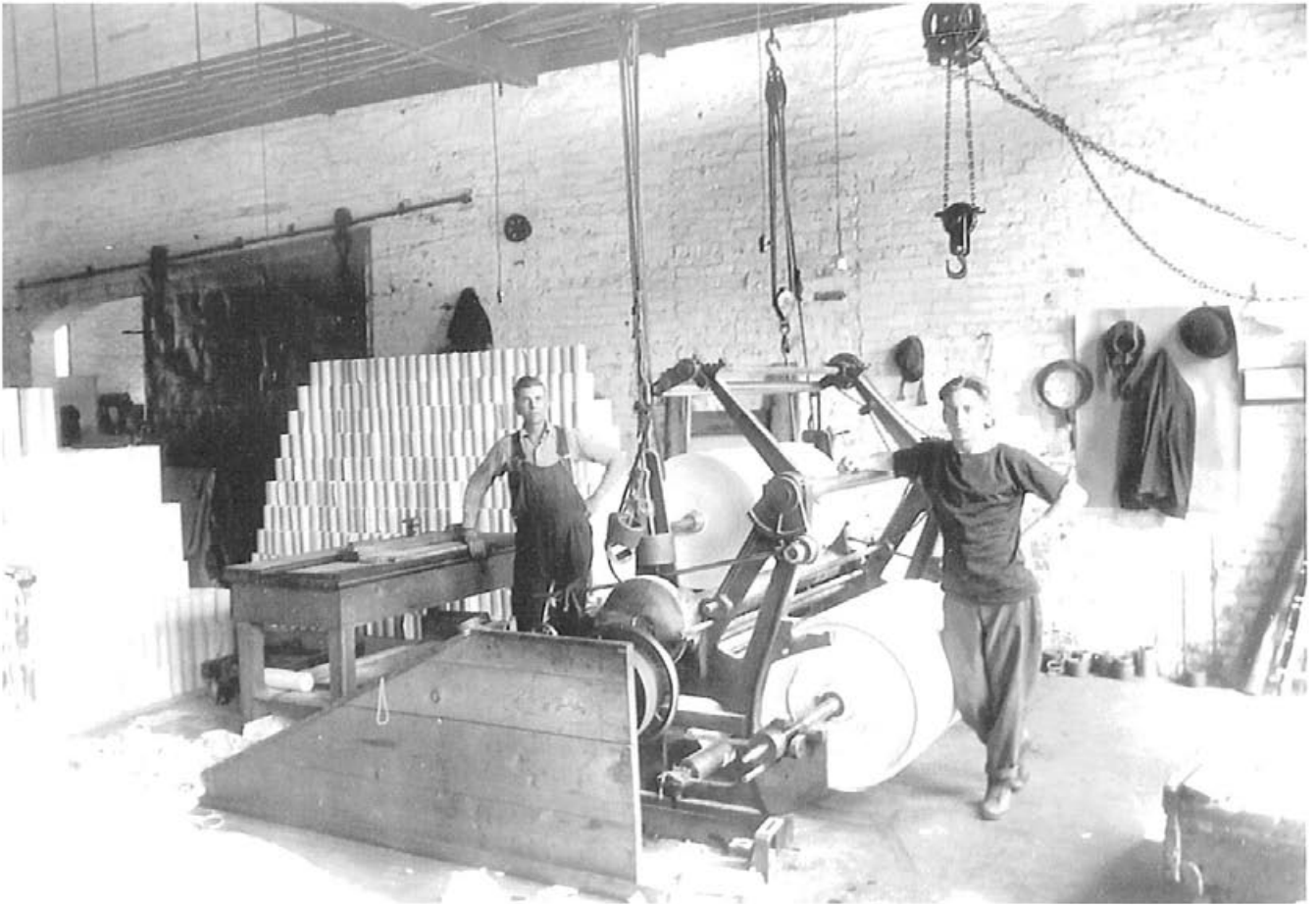


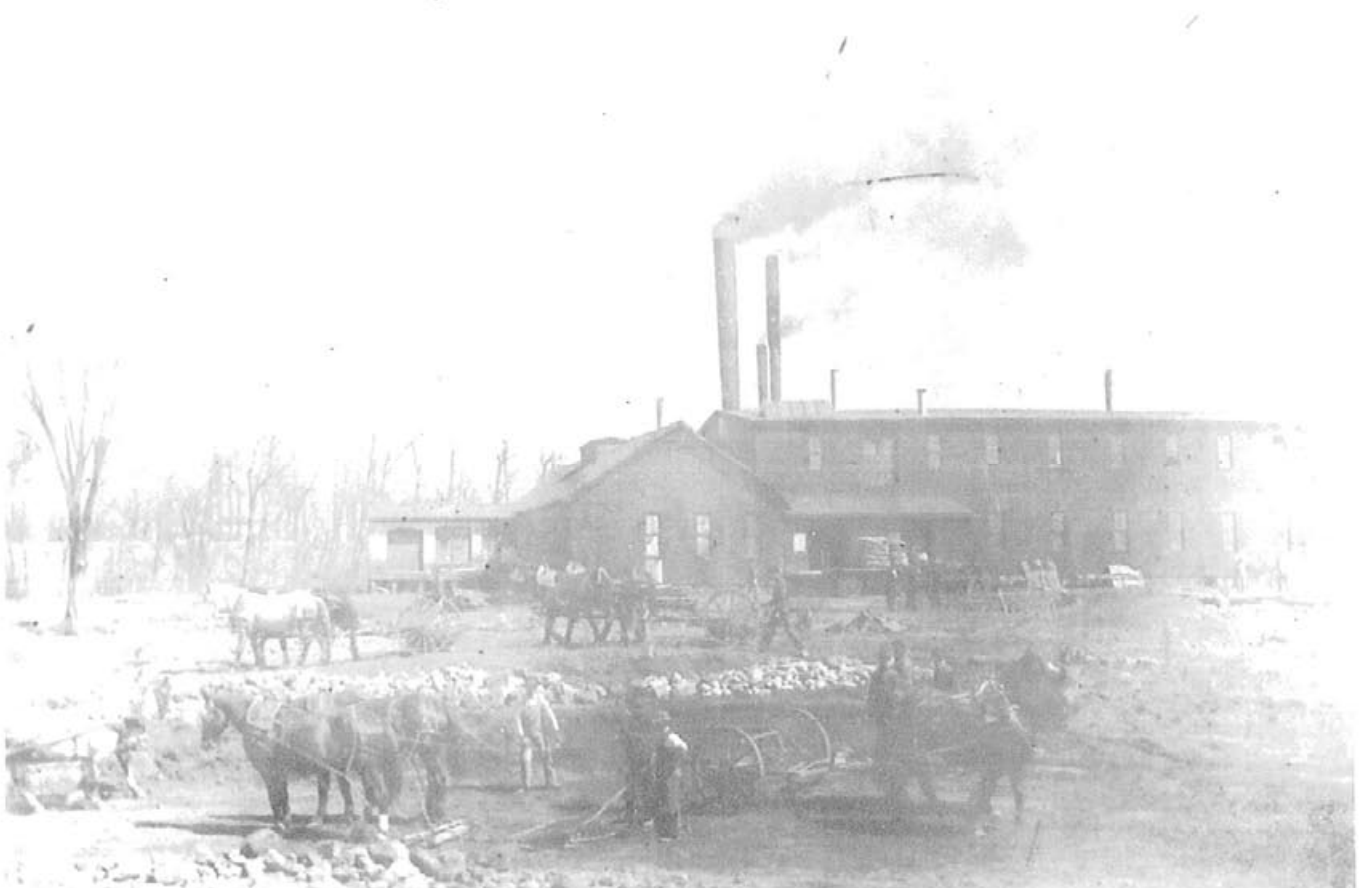




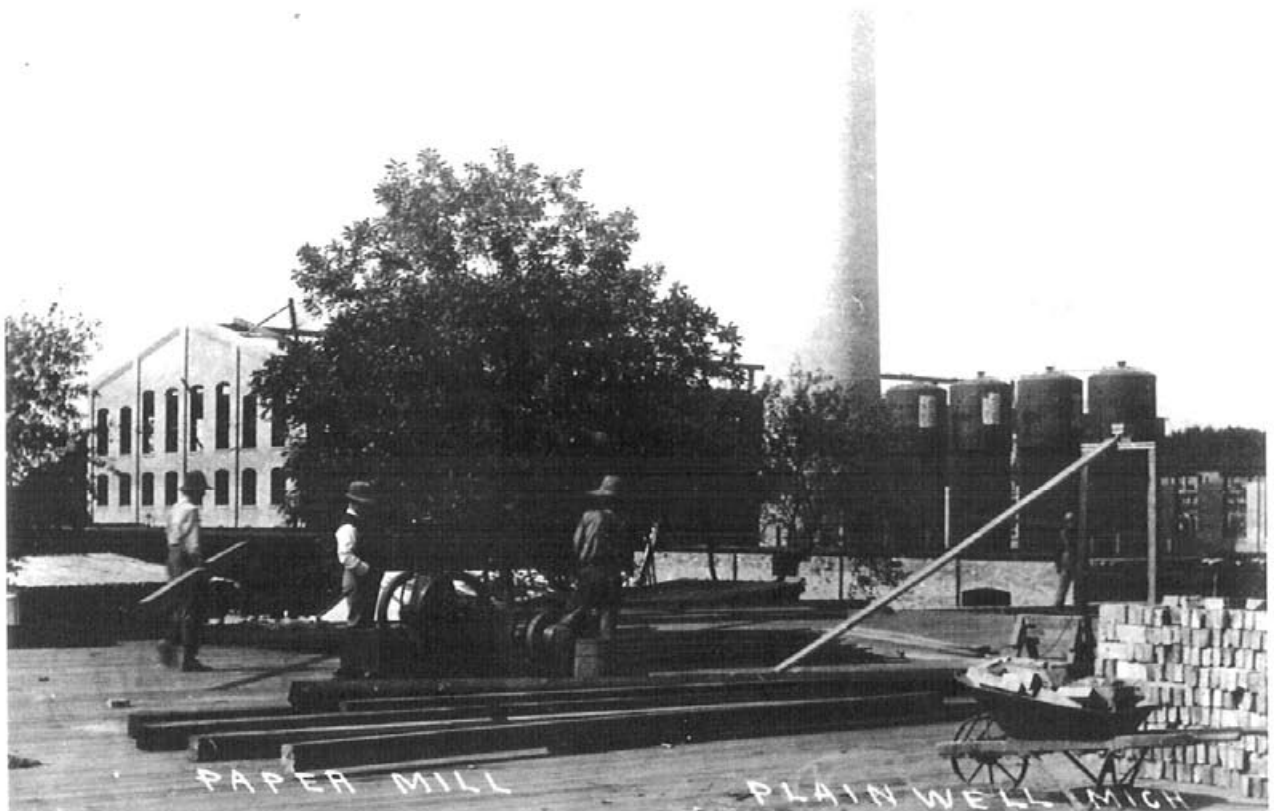
*Demolition of several other buildings*







1906 - Clearing land - old well in background



1906



Mill Race Dam - built 1856

---

View of the Dam, Plainwell, Michigan



Upper level - Mill Race  
Lower level - Kalamazoo River

Early Mill - 1890





Digging the mill race.

1856

Falls 8 ft drop into Kal River

Dook

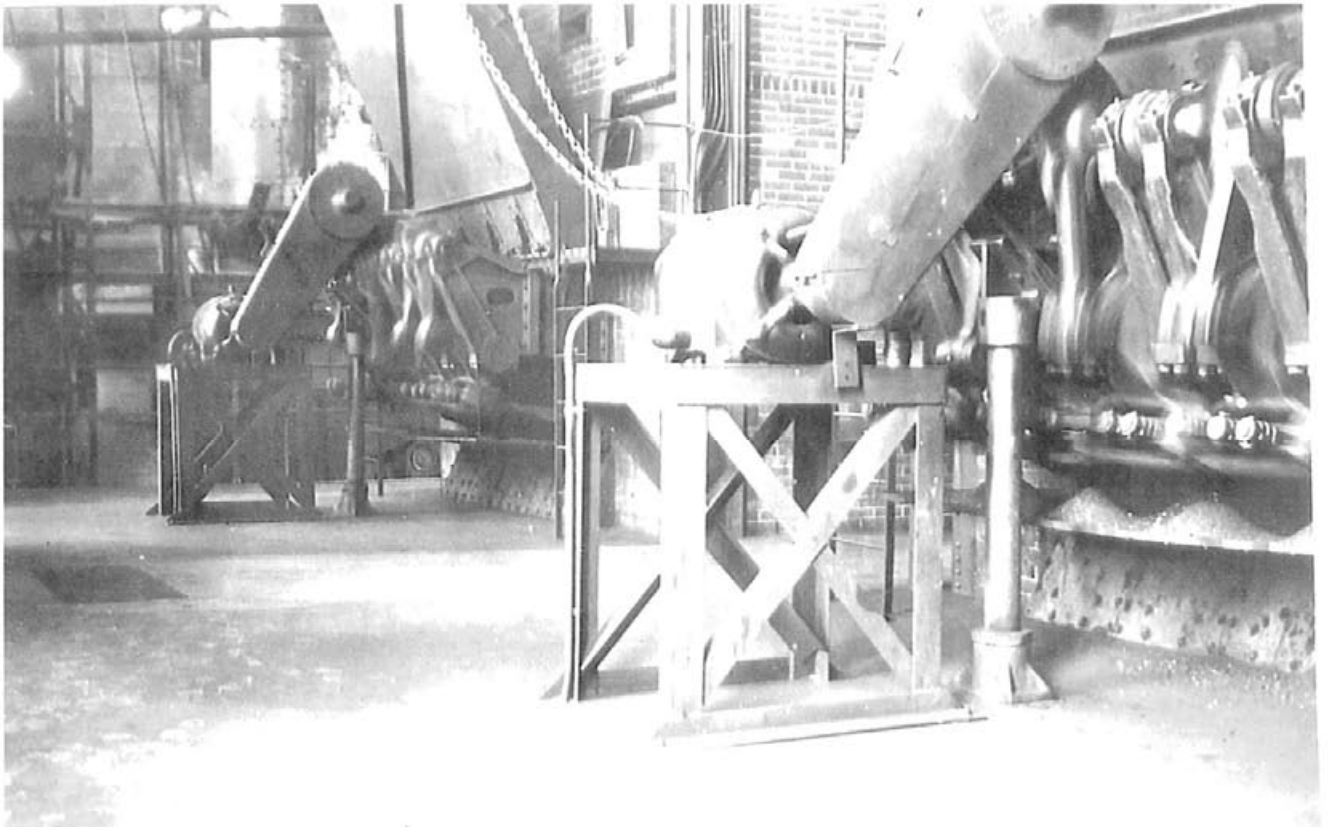
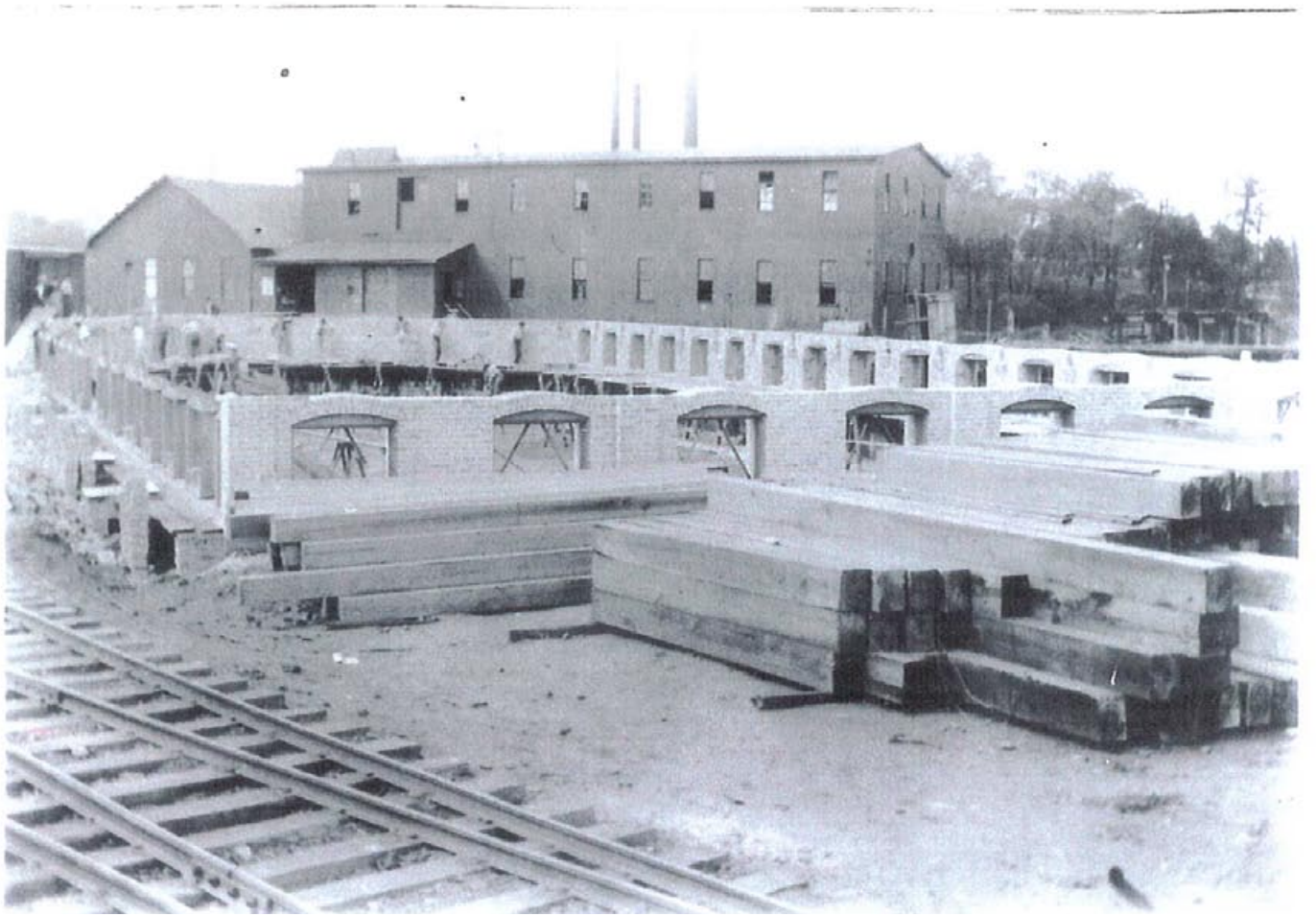


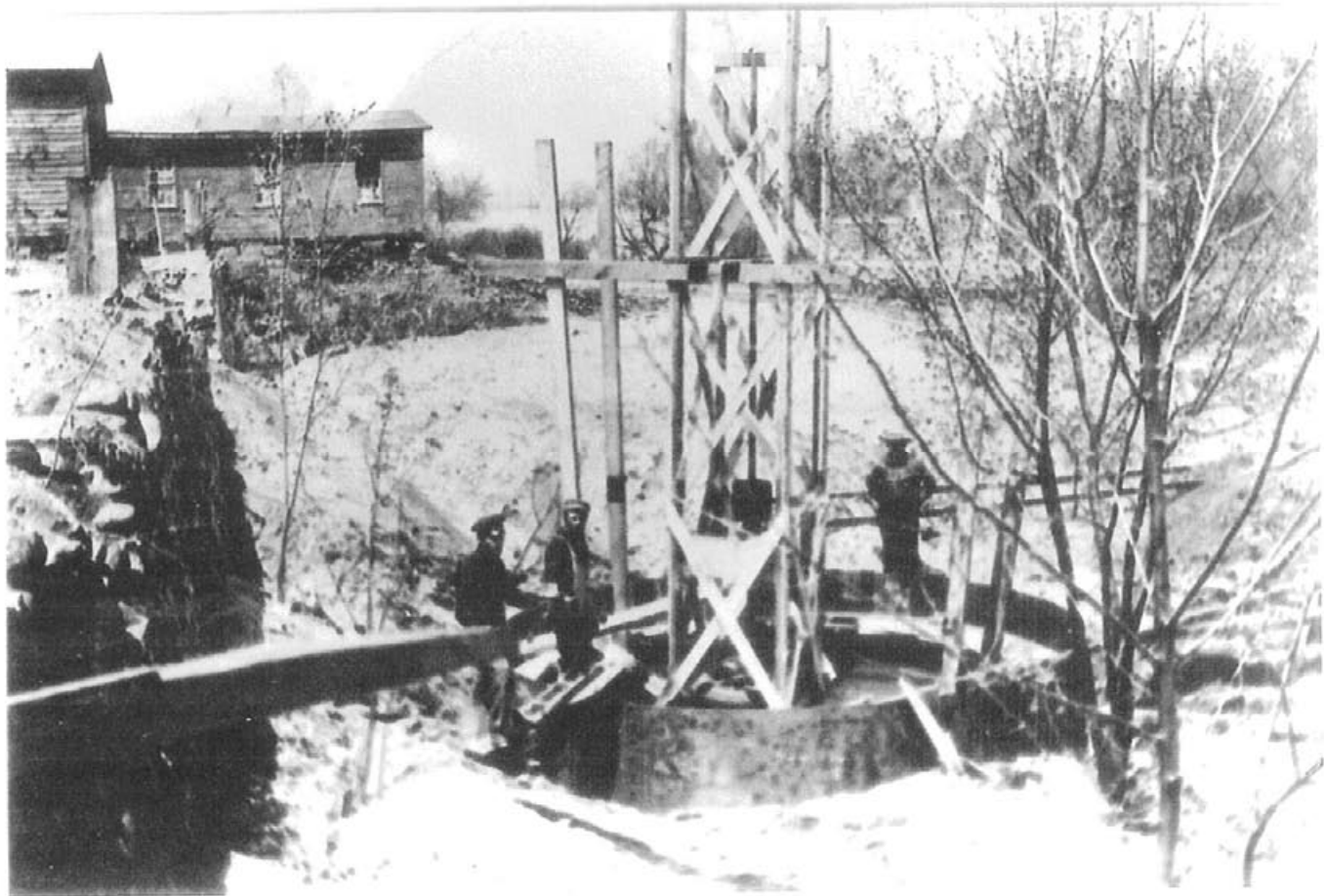
114 PRO-UM  
1890 1/2 1/2 1/2



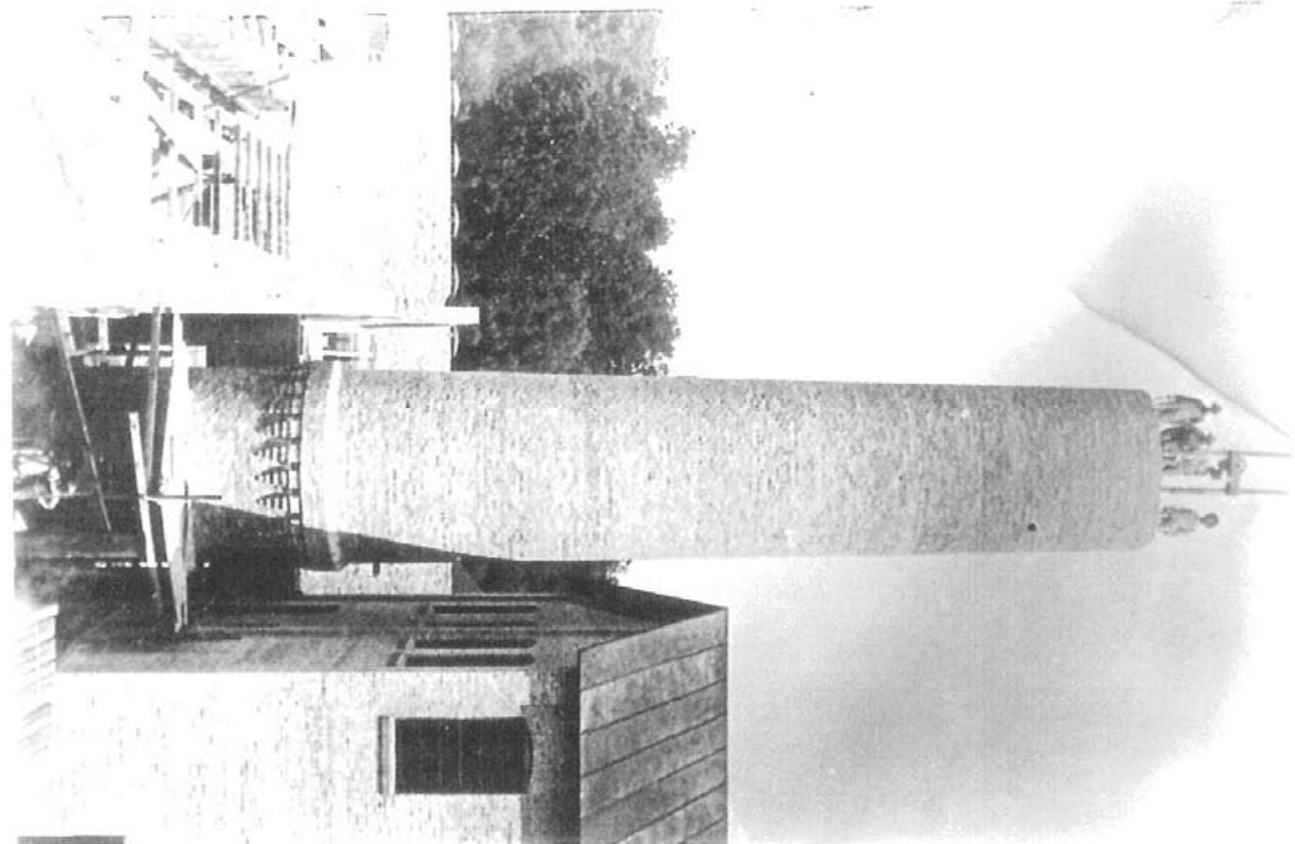
MICH. PAPER CO.  
PATERSON, MICH.

PRO-ETH & PRO  
Call 1-800-7-7-7-7





1906



2



1914



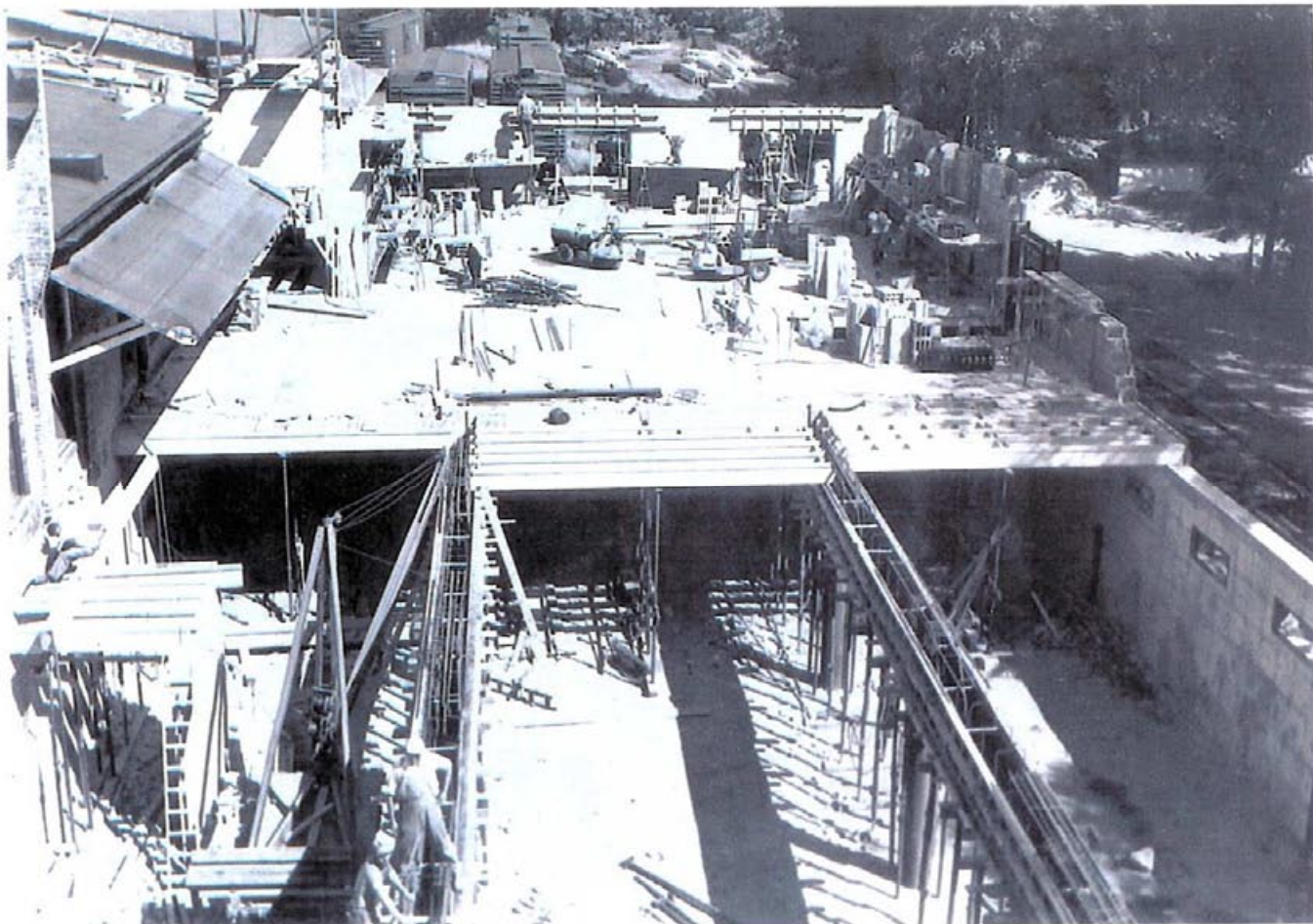


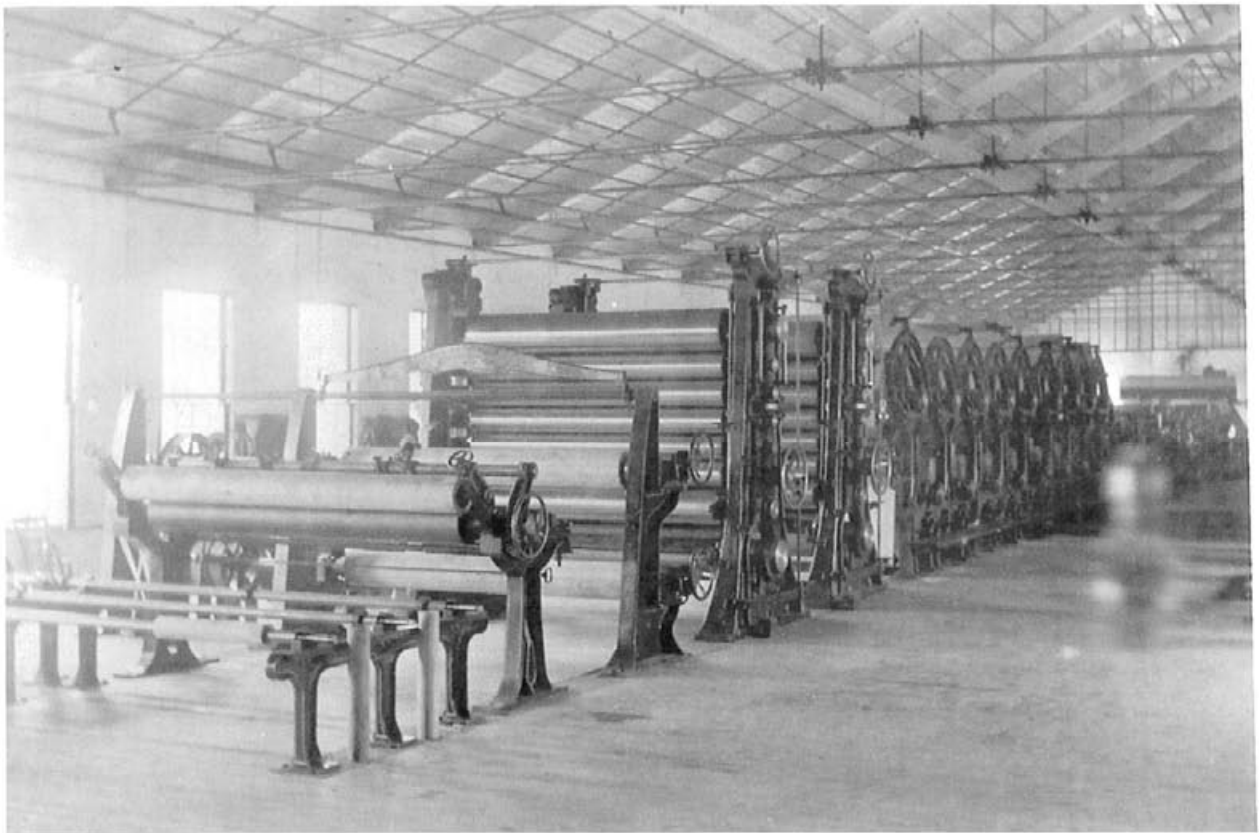


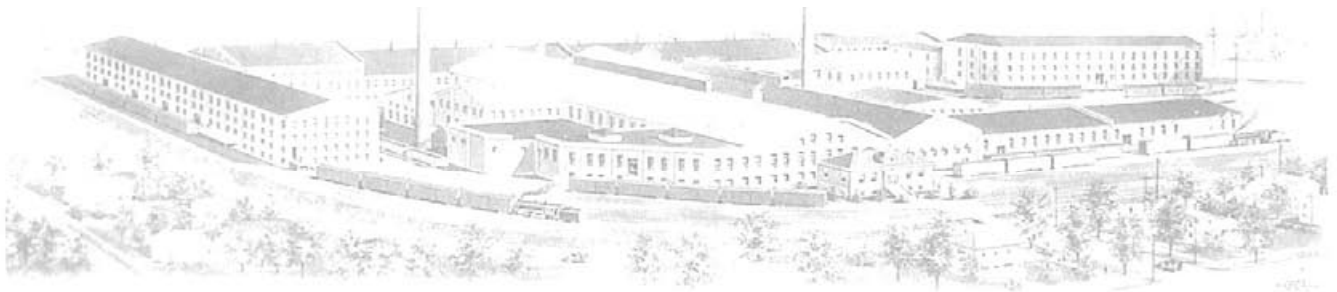
1947



1952







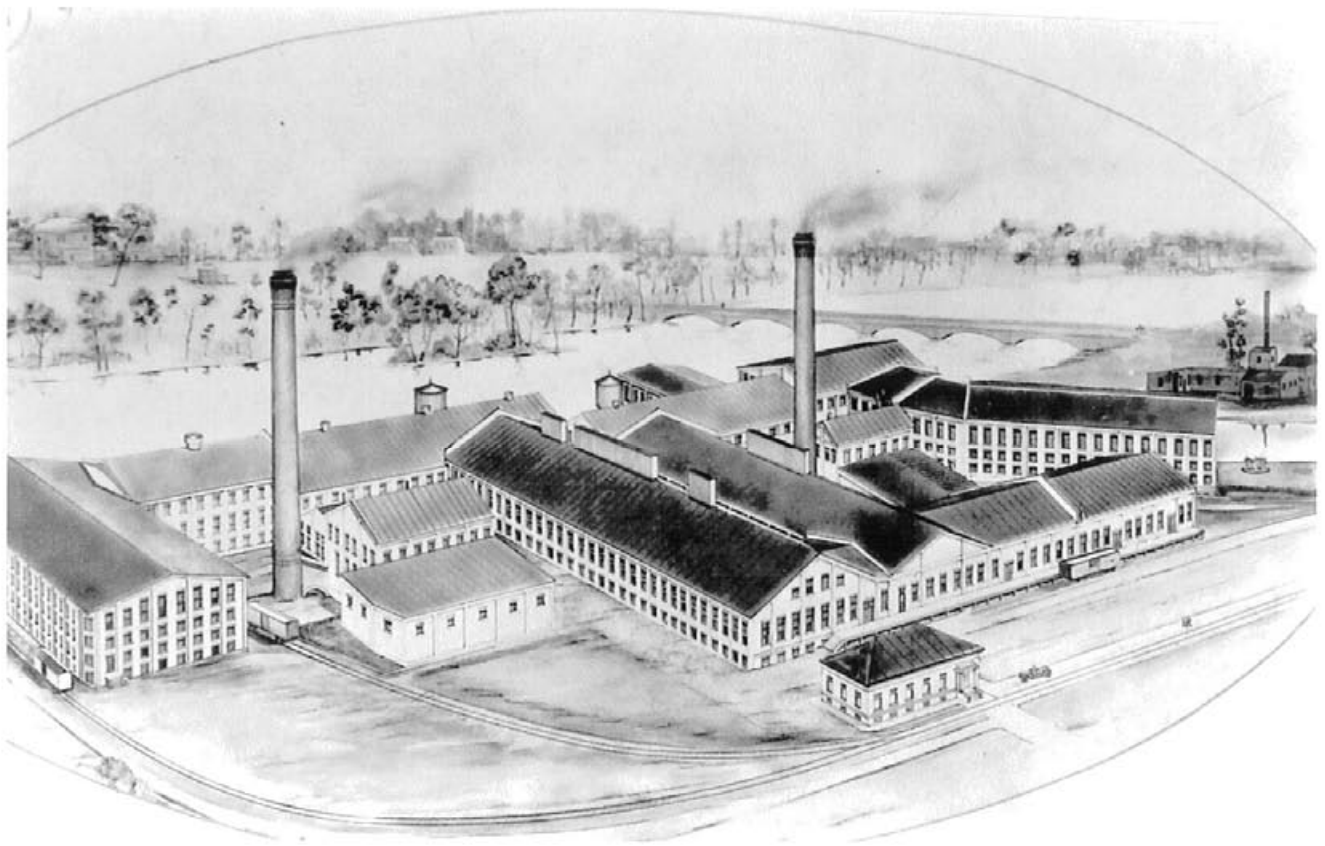
THE MICHIGAN PAPER COMPANY  
OF  
PLAINWELL, MICHIGAN

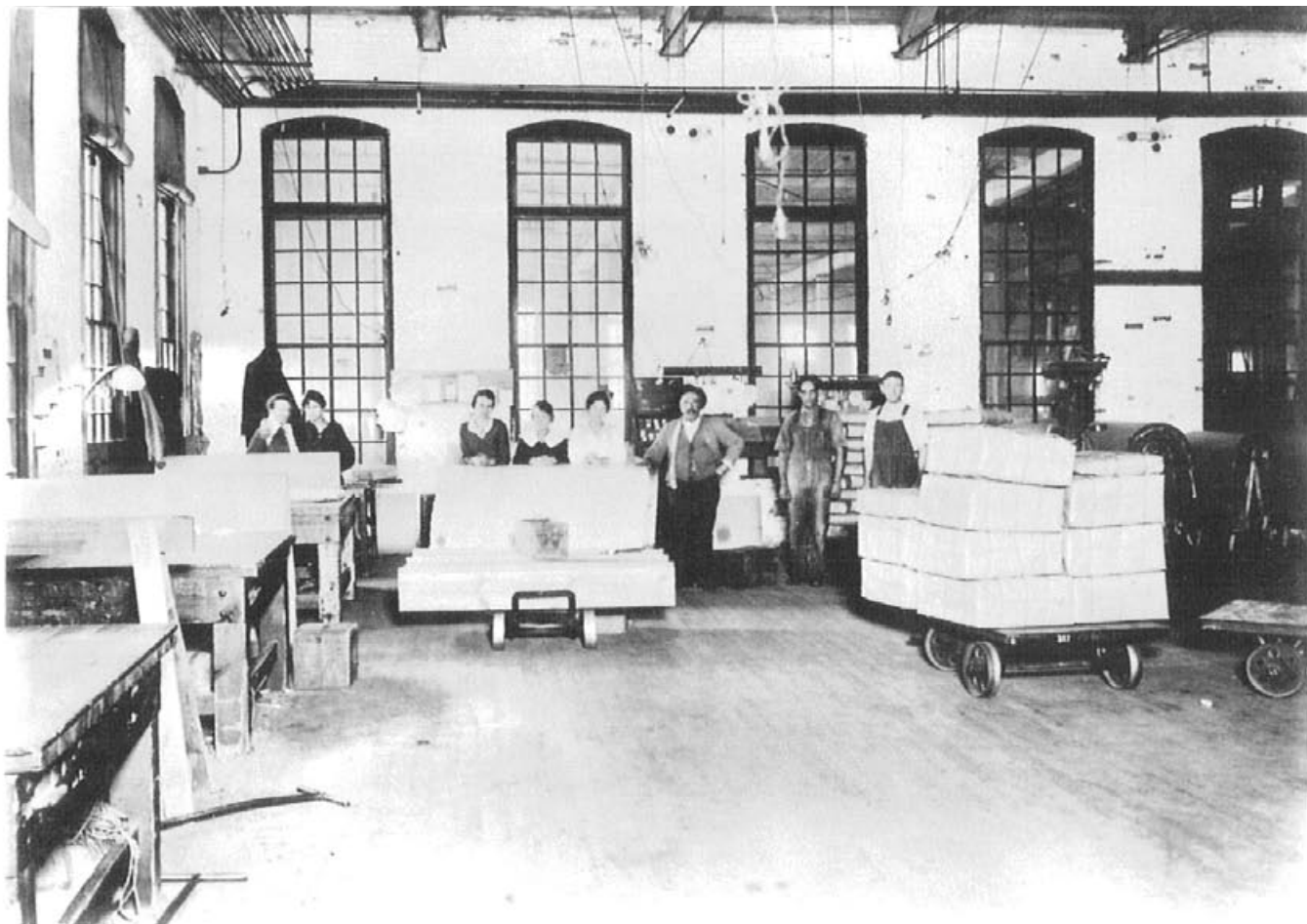
(North) Right side of Allegan St.  
houses where Paper Mill is located

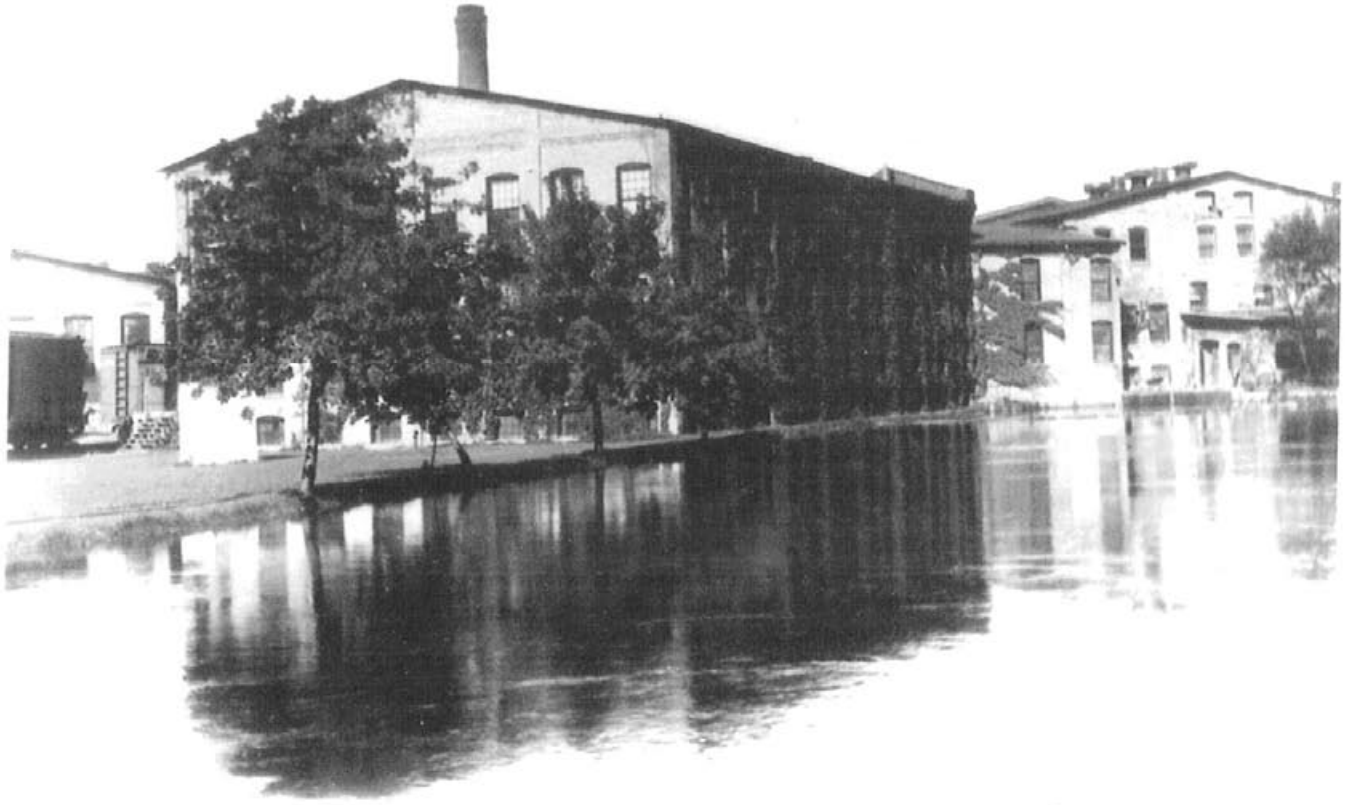


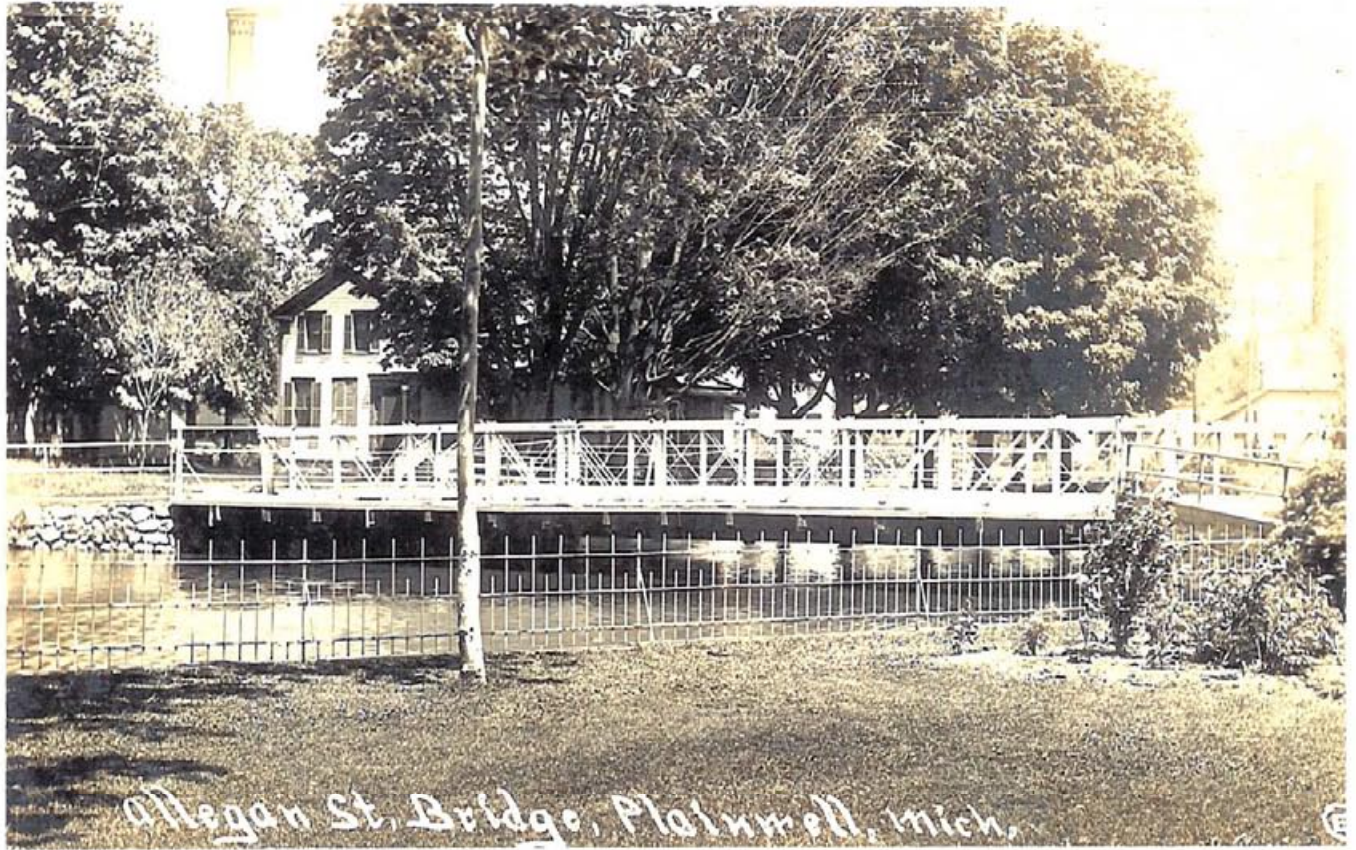
SCENE ON ALLEGAN ST.  
PLAINWELL MICH.

M 1664









Allegan St. Bridge, Plainwell, Mich.



12-19

HICKS PARK, PLAINWELL, MICH.

PUB. BY CARL B. WILLIAMS,